

C. IZVIRI

C.0. POJASNILA K PREGLEDNICAM

Poglavje o izviri (C) sestavlja pet preglednic, v katerih so prikazani osnovni podatki in rezultati meritev na vodomernih postajah, ki delujejo v mreži za izvire.

Razlage pojmov in okrajšav v preglednicah:

Št. – tekoča številka izvira;
Šifra – šifra vodomerne postaje (po šifrantu Agencije Republike Slovenije za okolje);
Tip – opremljenost postaje (P – podatkovni zapisovalnik);
Postaja – ime postaje za izvir oz. lokacija;
Izvir – ime izvira;
Kota »0« – nadmorska višina kote "nulte" točke vodomera (v metrih nad gladino Jadranskega morja);
X in Y – Gauss-Kruegerjeve koordinate položaja postaje na topografski karti merila 1:25000;
Začetek opazovanj – leto, v katerem so se začela opazovanja;
Stran – stran v letopisu, na kateri so za postajo izvira navedeni podatki o vodostajih (H), pretoku (Q), temperaturi vode (T), in specifični električni prevodnosti (SEP);
Hnk – najnižji vodostaj v letu (meseču) – konica;
Hs – srednji vodostaj v letu (meseču);
Hvk – najvišji vodostaj v letu (meseču) – konica;
Tnk – najnižja temperatura vode v letu (meseču) – konica;
Ts – srednja temperatura vode v letu (meseču);
Tvk – najvišja temperatura vode v letu (meseču) – konica.
SEPNk – najnižja specifična električna prevodnost v letu (meseču);
SEPs – srednja specifična električna prevodnost v letu (meseču);
SEPVk – najvišja specifična električna prevodnost v letu (meseču);
Qnk – najmanjši pretok v letu (meseču) – konica;
Qs – srednji pretok v letu (meseču);
Qvk – največji pretok v letu (meseču) – konica;
 ---- – ni podatka;

C. SPRINGS

C.0. EXPLANATION TO THE TABLES

The chapter on springs (C) consists of five tables in which basic data are listed, as well as the measurement results from water gauging stations which were included in the spring network.

Key to the terms and abbreviations used in the tables:

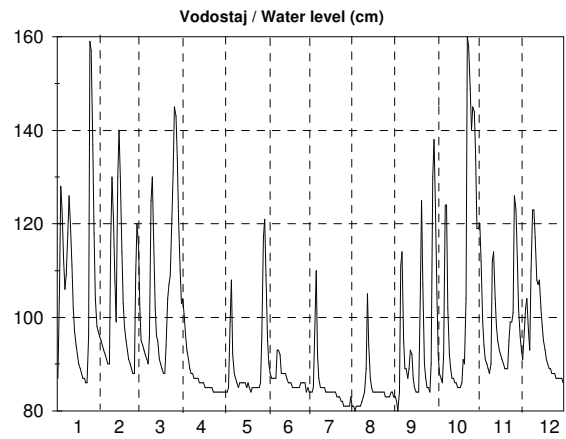
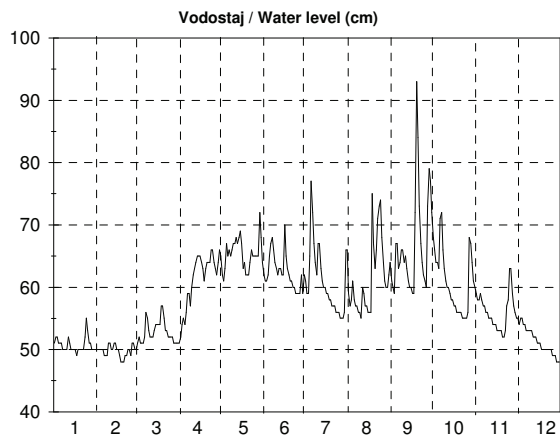
Št. (No) – current number of the spring;
Šifra (Code) – code of a water gauging station (acc. to the code list Environmental Agency of the Republic of Slovenia);
Tip (Type) – equipment at the station (P – data logger);
Postaja (Station) – name of the station for a spring or location;
Izvir – the name of the spring;
Kota (Datum point) – the "zero" point of the gauge altitude (in meters above the level of the Adriatic Sea);
X and Y – Gauss-Krueger coordinates of the station's position on the topographic map of scale 1:25000;
Začetek opazovanj (Beginning of observations) – the year in which the observations began;
Stran (Page) – the page in the yearbook on which the data on water levels (H), discharges (Q), water temperature (T), and specific electrical conductance (SEP) are listed for the spring station;
Hnk – the lowest annual (monthly) water level – extreme;
Hs – mean annual (monthly) water level;
Hvk – the highest annual (monthly) water level – extreme;
Tnk – the lowest annual water temperature (monthly) – extreme;
Ts – mean annual water temperature (monthly);
Tvk – the highest annual water temperature (monthly) – extreme;
SEPNk – the lowest annual (monthly) specific electrical conductance;
SEPs – mean annual (monthly) specific electrical conductance;
SEPVk – the highest annual (monthly) specific electrical conductance;
Qnk – the lowest annual (monthly) discharge – extreme;
Qs – mean annual (monthly) discharge;
Qvk – the highest annual (monthly) discharge – extreme;
 ---- – no data;

C. 1. Seznam vodomernih postaj na izvirih (I. 2007)

Št.	Šifra	Postaja	Tip	Izvir	Y	X	Kota "0" m n.m.	Začetek opazovanj				
									H	Q	T	SEP
1	4360	Izvir	P	Kamniška Bistrica	5468815	5131580	-	2001	+		+	+
2	4965	Spodnja Bilpa	P	Bilpa	5497420	5040950	-	2005	+		+	+
3	4985	Dolence I	P	Krupa	5518040	5054200	-	2004	+	+	+	
4	4995	Metlika	P	Metliški Obrh	5525145	5056475	-	2003		+	+	+
5	6253	Letošč	P	Letožnik	5490060	5126310	-	2005	+		+	+
6	8453	Izvir	P	Podroteja	5425180	5094000	327,78	1999	+		+	+
7	50621-01	Brestovica	P	B-2 vrtina	5392720	5074750	-	2006	+			

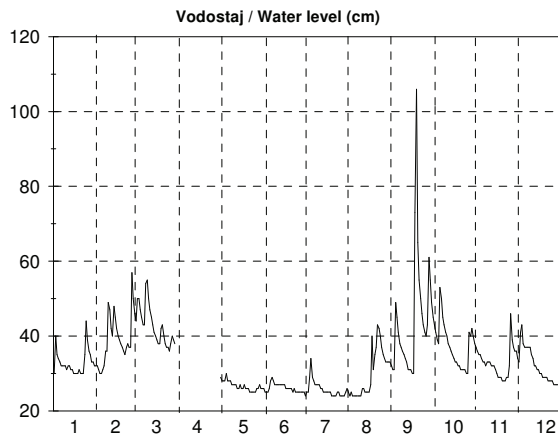
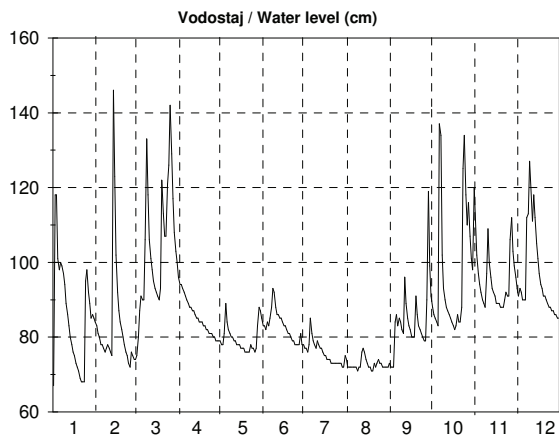
C. 2. Dnevni vodostaji z nivogramom - v cm (I. 2007)

Št.: 1 Izvir Kamniška Bistrica												Št.: 2 Spodnja Bilpa Bilpa																					
Šif: 4360 Tip: P Kota"0": ----												Šif: 4965 Tip: P Kota"0": ----																					
Dan	1	2	3	4	5	6	7	8	9	10	11	12	Dan	1	2	3	4	5	6	7	8	9	10	11	12								
1	51	50	50	51	65	62	61	59	61	68	59	55	1	87	95	102	104	84	95	84	81	83	105	120	93								
2	52	50	51	52	62	61	59	57	60	66	58	54	2	106	94	95	100	84	90	84	81	82	92	112	91								
3	52	50	52	54	61	61	59	58	59	64	58	55	3	128	93	94	96	84	88	84	80	80	88	99	97								
4	51	50	51	55	63	62	65	61	67	64	59	55	4	123	92	93	93	85	87	85	81	84	87	94	102								
5	51	50	51	54	67	65	77	58	67	63	58	54	5	112	91	92	91	99	87	96	81	111	86	91	104								
6	51	49	51	56	65	67	72	57	63	71	57	54	6	106	90	91	89	108	87	110	81	114	92	90	97								
7	50	49	52	59	66	68	67	57	64	72	57	53	7	109	90	90	88	92	87	92	81	95	124	89	93								
8	50	49	56	59	65	66	64	56	66	66	56	53	8	118	116	96	88	88	93	87	82	89	124	88	110								
9	50	51	55	57	66	64	62	56	66	63	56	53	9	126	130	125	87	87	93	85	83	89	102	90	123								
10	50	51	53	60	67	63	67	55	64	61	55	53	10	120	120	130	87	86	92	85	84	87	92	112	123								
11	52	50	52	62	67	62	67	60	65	60	55	53	11	111	108	117	87	85	88	85	89	89	89	114	117								
12	51	50	52	63	68	63	63	59	63	60	55	52	12	102	99	102	87	86	88	85	105	93	87	104	108								
13	50	51	52	64	67	63	61	57	61	59	54	52	13	97	130	96	86	86	88	84	94	92	87	98	107								
14	50	51	53	65	68	62	60	57	60	58	54	52	14	94	140	95	86	86	88	84	87	87	86	95	108								
15	50	50	54	65	69	62	60	56	60	58	54	51	15	92	130	91	86	86	87	84	85	85	86	93	102								
16	50	50	54	65	67	70	59	56	59	57	53	51	16	90	114	90	86	86	86	84	84	84	85	92	98								
17	49	49	54	64	63	65	59	56	59	57	53	51	17	89	103	89	85	85	86	84	84	84	85	91	95								
18	50	48	54	63	64	63	58	75	72	56	53	50	18	88	98	88	85	86	86	84	84	84	85	90	93								
19	50	48	57	61	62	62	58	67	93	56	53	50	19	87	95	88	85	85	85	84	84	104	86	89	91								
20	50	48	57	63	62	61	57	63	84	56	52	50	20	87	93	94	85	84	85	84	84	125	91	89	90								
21	50	49	55	64	62	61	57	66	73	56	52	50	21	86	91	104	85	85	85	83	84	107	90	89	89								
22	50	49	53	64	64	60	57	71	67	55	53	50	22	86	90	107	85	85	85	83	84	90	104	95	89								
23	52	50	53	64	66	60	56	73	64	55	57	50	23	96	89	109	84	85	85	83	84	87	160	99	88								
24	55	50	52	66	65	59	56	74	62	55	58	50	24	159	88	121	84	85	85	82	84	85	158	99	88								
25	53	49	52	66	65	59	56	68	61	55	63	50	25	157	88	131	84	85	86	82	83	85	149	101	88								
26	51	51	52	64	65	59	55	64	60	56	63	49	26	137	109	145	84	85	86	81	83	84	140	126	87								
27	51	51	52	63	65	59	55	61	73	68	59	49	27	118	120	143	84	86	86	81	83	90	145	123	87								
28	50	50	51	62	65	62	55	60	79	67	57	49	28	104	115	134	84	96	86	81	83	130	144	113	87								
29	50	51	51	64	72	59	56	60	77	64	56	48	29	98	121	121	84	117	84	81	84	138	134	102	87								
30	50	51	51	66	68	62	66	62	72	61	55	48	30	97	110	110	84	121	85	81	84	125	119	96	87								
31	50	51	51	64	66	64	60	64	64	60	55	48	31	96	103	103	109	109	83	83	83	119	96	87	86								
Dan	18	19	2	1	3	27	27	9	17	22	21	28	Dan	17	25	19	23	17	29	26	4	4	6	6	31								
Hnk	49	48	50	51	61	58	55	55	58	55	52	45	Hnk	86	87	87	81	78	76	77	76	80	82	85	86								
Hs	51	50	53	61	65	62	61	61	67	61	56	51	Hs	107	104	106	87	90	87	85	84	95	107	99	97								
Hvk	56	52	60	67	73	73	80	79	98	77	65	56	Hvk	169	144	148	105	123	100	116	106	142	168	134	125								
Dan	24	26	19	30	29	16	5	18	19	6	26	3	Dan	25	13	27	1	30	1	6	12	29	23	26	10								
Hnk	45			Hs			58			Hvk			98			Hnk			76			Hs			96			Hvk			169		



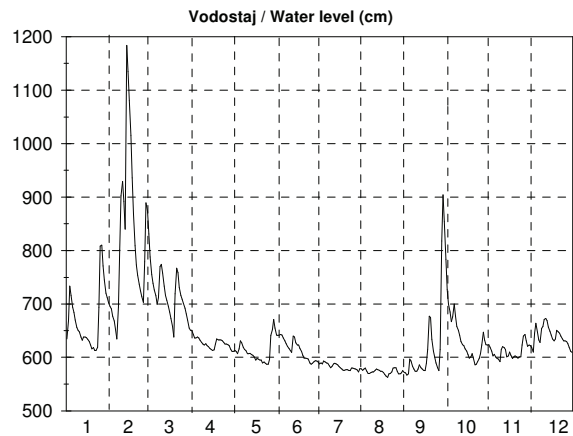
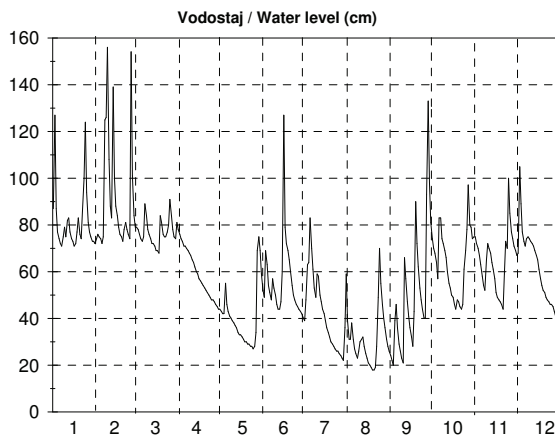
C. 2. Dnevni vodostaji z nivogramom - v cm (I. 2007)

Št.: 3 Dolence I Krupa												Št.: 5 Letošč Letožnik													
Šif: 4985 Tip: P			Kota"0": ----									Šif: 6253 Tip: P			Kota"0": ----										
Dan	1	2	3	4	5	6	7	8	9	10	11	12	Dan	1	2	3	4	5	6	7	8	9	10	11	12
1	67	83	74	96	79	83	77	72	72	88	111	93	1	30	32	44		29	26	24	25	32	45	37	34
2	118	81	75	94	78	83	77	72	72	86	102	91	2	40	31	50		28	25	25	24	31	43	36	33
3	118	80	80	94	78	82	76	72	72	85	97	93	3	35	30	50		28	25	25	25	31	41	35	41
4	101	78	87	93	81	84	78	72	84	84	94	92	4	34	30	47		28	25	29	24	49	39	35	43
5	98	78	91	92	89	83	85	72	86	83	92	90	5	33	31	45		30	26	34	24	45	38	34	38
6	100	77	90	91	84	85	81	72	83	137	90	90	6	32	32	43		28	28	29	24	41	53	33	37
7	99	76	90	90	82	88	79	72	85	134	89	90	7	32	36	43		28	29	28	24	38	50	33	37
8	97	77	106	89	81	93	78	71	84	102	88	112	8	32	36	54		28	28	27	24	37	45	32	37
9	94	78	133	88	80	92	77	72	82	93	97	113	9	32	49	55		27	27	27	24	36	43	33	37
10	89	77	118	88	80	88	79	72	81	90	109	127	10	31	47	50		27	27	27	24	35	41	33	37
11	86	76	106	87	79	86	78	76	96	88	100	120	11	32	42	47		27	27	27	26	34	40	33	35
12	83	75	101	87	79	86	77	77	89	87	96	111	12	32	40	45		27	27	26	26	33	38	32	34
13	80	146	98	86	78	85	77	76	85	86	93	118	13	31	48	43		26	27	26	25	31	37	32	32
14	78	123	95	85	78	85	76	74	83	85	92	112	14	31	45	41		26	27	25	25	31	36	32	32
15	76	102	93	85	78	84	75	73	82	84	91	105	15	30	42	40		27	27	25	25	31	35	31	31
16	75	92	92	84	77	83	75	72	80	83	89	101	16	30	40	39		26	27	25	25	30	34	30	31
17	73	87	91	84	77	83	74	72	80	82	89	97	17	30	39	38		26	26	25	27	30	33	29	30
18	72	84	90	84	77	82	74	71	80	83	89	94	18	30	38	38		27	26	25	40	73	33	29	30
19	71	82	93	83	76	81	74	71	91	86	88	93	19	31	37	42		26	26	25	31	106	32	29	29
20	69	80	122	83	76	81	73	73	86	84	88	91	20	30	36	43		26	26	24	35	65	32	28	29
21	68	78	113	82	76	80	73	72	83	84	88	91	21	30	35	40		26	26	24	37	55	31	28	29
22	68	76	107	82	76	79	73	73	82	88	90	90	22	30	37	38		25	25	24	43	50	31	28	29
23	68	75	107	81	78	79	73	74	81	125	92	89	23	35	38	37		25	26	24	42	46	31	29	28
24	95	73	121	81	77	78	73	73	80	134	91	88	24	44	37	37		25	25	25	40	43	31	29	28
25	98	72	126	81	77	78	73	73	79	118	91	88	25	39	37	36		25	25	25	37	41	30	32	28
26	92	76	142	80	76	78	73	72	79	110	106	87	26	36	57	38		25	25	24	35	40	30	46	28
27	89	75	129	80	77	78	73	72	90	116	112	87	27	35	50	40		26	25	24	34	43	41	39	27
28	85	74	117	79	83	81	72	72	119	107	103	86	28	33	46	39		26	25	24	33	61	40	37	27
29	86		108	79	88	78	72	72	99	101	99	86	29	33		38		27	25	24	33	55	42	36	27
30	85		103	79	87	78	75	72	91	98	96	85	30	32				26	25	25	33	49	40	36	27
31	84		100		85		74	73		120		85	31	32				26		26	33		38		27
Dan	1	26	2	29	22	27	28	2	3	18	19	31	Dan	1	4	25		22	29	20	7	16	26	22	31
Hnk	67	72	73	78	75	77	70	70	72	82	87	85	Hnk	29	30	35		24	24	22	24	29	30	28	26
Hs	86	83	103	86	80	83	76	73	84	98	95	97	Hs	33	39	43		27	26	26	30	44	38	33	32
Hvk	146	169	145	98	96	95	89	77	138	183	122	131	Hvk	46	70	65		32	31	45	66	150	71	52	51
Dan	2	13	26	1	4	7	5	11	28	6	9	10	Dan	2	26	8		8	7	4	17	18	6	26	3
Hnk		67			Hs			87		Hvk		183	Hnk		22			Hs		34		Hvk		150	



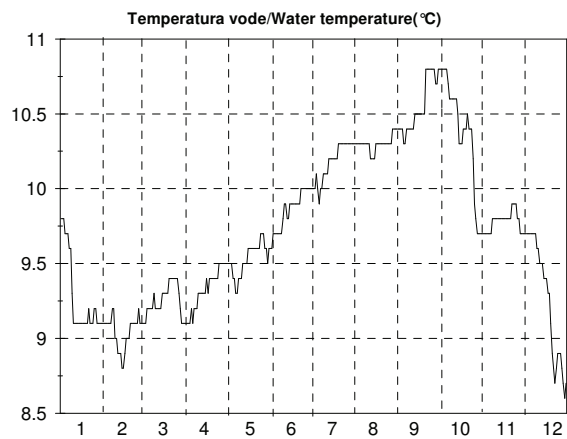
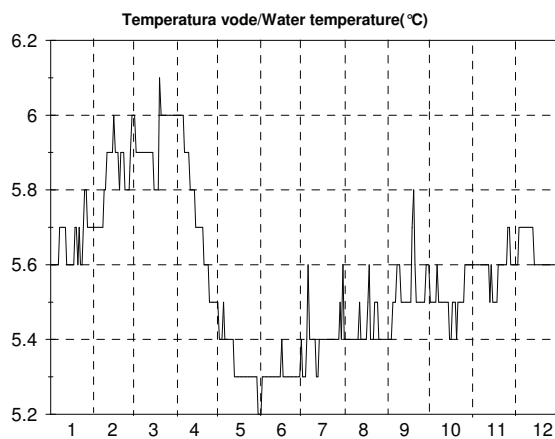
C. 2. Dnevni vodostaji z nivogramom - v cm (I. 2007)

Št.: 6 Izvir Podroteja												Št.: 4 Brestovica B-2 vrtina													
Šif: 8453 Tip: P Kota"0": 327.78												Šif: 50621-01 Tip: P Kota"0": ----													
Dan	1	2	3	4	5	6	7	8	9	10	11	12	Dan	1	2	3	4	5	6	7	8	9	10	11	12
1	87	74	79	78	44	52	39	39	24	74	75	67	1	635	695	831	651	611	642	591	579	572	784	624	622
2	127	76	79	76	43	49	48	31	22	70	72	68	2	669	691	788	643	613	641	588	576	571	727	619	618
3	87	75	78	74	42	69	63	31	20	68	70	105	3	733	677	755	636	611	642	590	578	567	700	612	610
4	77	74	76	73	42	63	64	38	39	64	67	89	4	716	668	739	636	607	643	588	580	569	685	603	645
5	74	72	74	71	55	54	83	31	46	57	63	77	5	694	652	726	638	616	642	593	574	597	667	606	664
6	72	75	73	71	46	51	70	27	36	83	58	73	6	684	635	715	636	631	636	591	570	593	676	600	647
7	71	125	75	70	43	48	61	25	29	83	54	71	7	670	694	699	632	627	631	590	570	583	700	598	633
8	75	126	89	69	41	57	53	23	26	74	52	74	8	656	801	712	628	619	626	589	572	578	677	597	628
9	79	156	84	68	40	53	49	26	23	72	65	75	9	651	902	770	625	615	621	584	573	574	658	592	654
10	75	108	78	67	39	50	59	30	21	69	72	74	10	648	929	774	623	613	617	581	573	574	651	615	658
11	82	88	76	65	38	46	58	31	66	66	70	73	11	638	892	758	626	607	613	583	576	578	641	620	671
12	83	83	74	64	37	44	50	32	57	60	68	72	12	632	840	733	622	607	609	588	578	586	630	618	673
13	77	139	72	62	36	44	47	28	47	55	64	71	13	638	1184	716	620	608	640	589	577	581	624	615	669
14	74	100	72	60	34	47	44	25	41	53	61	69	14	638	1135	707	617	605	638	588	576	578	622	601	657
15	73	88	71	59	33	60	42	23	36	50	57	67	15	637	1081	696	615	604	627	586	574	576	616	603	649
16	71	84	69	57	33	127	39	21	32	49	51	65	16	634	1016	685	613	601	623	583	574	575	612	610	642
17	72	79	69	56	32	79	36	20	28	46	49	61	17	630	936	673	614	595	623	581	572	589	605	604	635
18	77	76	68	55	31	72	34	19	43	44	48	57	18	623	869	658	625	598	617	578	568	615	599	598	631
19	83	75	84	54	30	69	32	18	90	48	47	54	19	616	809	638	635	597	611	576	565	677	601	601	635
20	76	73	81	53	30	65	30	18	72	47	46	52	20	618	773	719	633	595	604	576	563	675	607	603	651
21	74	78	76	52	29	60	29	19	62	45	44	51	21	613	754	767	633	595	599	577	569	634	598	601	648
22	86	81	75	51	29	54	28	28	53	44	59	49	22	613	737	759	633	590	599	577	570	612	586	599	645
23	100	78	75	50	28	50	27	49	48	46	73	48	23	619	724	731	631	591	598	576	573	600	587	601	640
24	124	76	77	49	28	48	26	70	44	61	70	47	24	694	714	716	628	589	597	575	580	590	592	601	635
25	94	74	80	48	27	46	26	55	40	69	100	46	25	808	703	709	625	587	590	580	581	581	598	623	631
26	81	154	91	48	28	45	25	46	40	78	85	46	26	810	779	701	625	587	587	580	581	575	607	640	631
27	77	101	84	47	34	44	24	40	93	97	77	45	27	771	889	692	624	596	589	579	574	615	623	643	630
28	75	84	78	46	69	43	23	36	133	80	74	43	28	745	873	681	622	641	592	578	569	818	647	631	626
29	73	75	75	45	75	42	22	31	98	79	71	41	29	720	670	670	615	652	594	577	569	904	632	621	619
30	73	74	74	44	69	40	36	28	81	74	69	41	30	712	655	655	611	671	593	573	571	854	624	623	611
31	72	81	81	59	59	26	59	26	40	75	75	40	31	703	651	651	655	655	655	579	575	623	623	609	609
Dan	1	6	18	30	25	15	30	20	4	22	21	31	Dan	21	6	19	30	26	26	30	20	3	23	9	31
Hnk	68	71	67	43	26	39	21	17	19	43	42	38	Hnk	606	629	631	606	581	579	562	556	559	582	587	605
Hs	81	92	77	59	40	56	43	31	50	64	64	62	Hs	673	823	717	627	611	616	583	574	620	639	611	639
Hvk	163	181	101	79	77	157	112	78	146	122	109	140	Hvk	829	1260	853	653	676	654	602	587	914	820	650	675
Dan	2	26	19	1	29	16	4	23	28	6	25	3	Dan	25	13	1	1	30	1	1	25	29	1	27	12
Hnk	17												Hnk	556											
Hs													Hs	643											
Hvk													Hvk	1260											



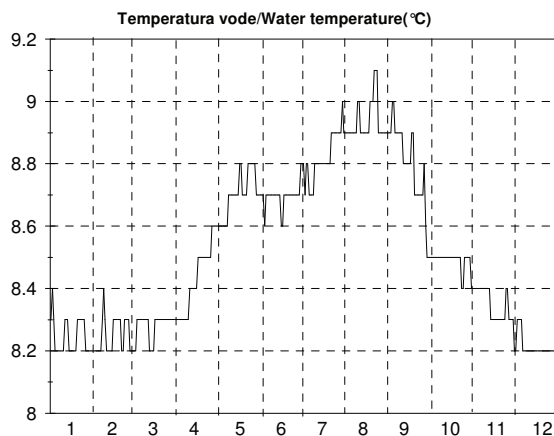
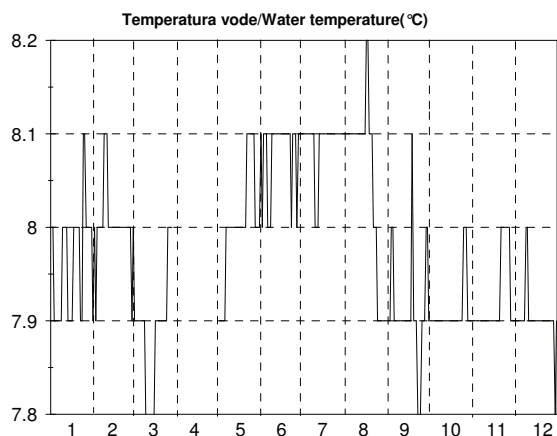
C. 4. Dnevne temperature vode s termogramom (I. 2007)

Št.: 1 Izvir Kamniška Bistrica												Št.: 2 Spodnja Bilpa Bilpa																					
Šif: 4360 Tip: P Kota"0": ----												Šif: 4965 Tip: P Kota"0": ----																					
Dan	1	2	3	4	5	6	7	8	9	10	11	12	Dan	1	2	3	4	5	6	7	8	9	10	11	12								
1	5.6	5.7	6	6	5.5	5.2	5.3	5.4	5.4	5.5	5.6	5.6	1	9.8	9.1	9.1	9.1	9.5	9.6	10	10.3	10.4	10.8	9.7	9.7								
2	5.6	5.7	6	6	5.4	5.3	5.3	5.4	5.4	5.5	5.6	5.6	2	9.8	9.1	9.1	9.1	9.5	9.6	10	10.3	10.4	10.8	9.7	9.7								
3	5.6	5.7	5.9	6	5.4	5.3	5.3	5.4	5.4	5.5	5.6	5.6	3	9.8	9.1	9.1	9.1	9.5	9.7	10	10.3	10.4	10.8	9.7	9.7								
4	5.6	5.7	5.9	6	5.4	5.3	5.4	5.4	5.5	5.5	5.6	5.7	4	9.7	9.1	9.2	9.1	9.5	9.7	10.1	10.3	10.4	10.8	9.7	9.7								
5	5.6	5.7	5.9	6	5.5	5.3	5.6	5.4	5.5	5.5	5.6	5.7	5	9.7	9.1	9.2	9.2	9.4	9.7	10	10.3	10.3	10.8	9.7	9.7								
6	5.6	5.7	5.9	6	5.4	5.3	5.4	5.4	5.5	5.6	5.6	5.7	6	9.7	9.1	9.2	9.1	9.4	9.7	9.9	10.3	10.3	10.8	9.7	9.7								
7	5.7	5.7	5.9	5.9	5.4	5.3	5.4	5.4	5.6	5.5	5.6	5.7	7	9.6	9.2	9.2	9.2	9.3	9.7	10	10.3	10.4	10.7	9.7	9.7								
8	5.7	5.8	5.9	5.9	5.4	5.3	5.4	5.4	5.6	5.5	5.6	5.7	8	9.6	9.2	9.2	9.2	9.3	9.7	10	10.3	10.4	10.6	9.8	9.7								
9	5.7	5.8	5.9	5.9	5.4	5.3	5.4	5.4	5.6	5.5	5.6	5.7	9	9.3	9	9.3	9.2	9.4	9.7	10.1	10.3	10.4	10.6	9.8	9.7								
10	5.7	5.9	5.9	5.9	5.4	5.3	5.4	5.4	5.5	5.5	5.6	5.7	10	9.1	9	9.2	9.3	9.4	9.8	10.1	10.3	10.4	10.6	9.8	9.6								
11	5.7	5.9	5.9	5.8	5.4	5.3	5.3	5.5	5.5	5.5	5.6	5.7	11	9.1	8.9	9.2	9.3	9.4	9.9	10.1	10.3	10.4	10.6	9.8	9.6								
12	5.6	5.9	5.9	5.8	5.4	5.3	5.3	5.4	5.5	5.5	5.6	5.7	12	9.1	8.9	9.2	9.3	9.5	9.9	10.1	10.2	10.4	10.6	9.8	9.5								
13	5.6	5.9	5.9	5.8	5.3	5.3	5.4	5.4	5.5	5.5	5.5	5.7	13	9.1	8.9	9.2	9.3	9.5	9.8	10.2	10.2	10.5	10.6	9.8	9.5								
14	5.6	5.9	5.9	5.8	5.3	5.3	5.4	5.4	5.5	5.5	5.6	5.7	14	9.1	8.8	9.2	9.3	9.5	9.8	10.2	10.2	10.5	10.5	9.8	9.5								
15	5.6	6	5.9	5.7	5.3	5.3	5.4	5.4	5.5	5.4	5.5	5.6	15	9.1	8.8	9.3	9.3	9.5	9.9	10.2	10.2	10.5	10.3	9.8	9.4								
16	5.6	5.9	5.8	5.7	5.3	5.4	5.4	5.4	5.5	5.4	5.5	5.6	16	9.1	8.9	9.3	9.4	9.6	9.9	10.2	10.3	10.5	10.3	9.8	9.4								
17	5.6	5.9	5.8	5.7	5.3	5.3	5.4	5.5	5.5	5.5	5.5	5.6	17	9.1	9	9.3	9.3	9.6	9.9	10.2	10.3	10.5	10.3	9.8	9.4								
18	5.7	5.9	5.8	5.7	5.3	5.3	5.4	5.6	5.7	5.5	5.5	5.6	18	9.1	9	9.3	9.4	9.6	9.9	10.2	10.3	10.5	10.4	9.8	9.3								
19	5.7	5.8	5.8	5.7	5.3	5.3	5.4	5.4	5.8	5.5	5.6	5.6	19	9.1	9	9.3	9.4	9.6	9.9	10.2	10.3	10.5	10.4	9.8	9.3								
20	5.6	5.9	6.1	5.7	5.3	5.3	5.4	5.4	5.6	5.4	5.6	5.6	20	9.1	9.1	9.4	9.4	9.6	9.9	10.3	10.3	10.5	10.4	9.8	9.1								
21	5.7	5.9	6	5.6	5.3	5.3	5.4	5.4	5.5	5.5	5.6	5.6	21	9.2	9.1	9.4	9.4	9.6	9.9	10.3	10.3	10.8	10.5	9.8	8.9								
22	5.6	5.9	6	5.6	5.3	5.3	5.4	5.5	5.5	5.5	5.6	5.6	22	9.1	9.1	9.4	9.4	9.6	9.9	10.3	10.3	10.8	10.4	9.9	8.8								
23	5.6	5.8	6	5.6	5.3	5.3	5.4	5.5	5.5	5.5	5.6	5.6	23	9.1	9.1	9.4	9.4	9.6	10	10.3	10.3	10.8	10.4	9.9	8.7								
24	5.7	5.8	6	5.6	5.3	5.3	5.4	5.5	5.5	5.5	5.6	5.6	24	9.1	9.1	9.4	9.4	9.6	10	10.3	10.3	10.8	10.4	9.9	8.8								
25	5.8	5.8	6	5.5	5.3	5.3	5.4	5.4	5.5	5.5	5.6	5.6	25	9.2	9.1	9.4	9.5	9.7	10	10.3	10.3	10.8	10.2	9.9	8.9								
26	5.8	5.8	6	5.5	5.3	5.3	5.4	5.4	5.5	5.6	5.7	5.6	26	9.2	9.2	9.4	9.5	9.7	10	10.3	10.3	10.8	9.9	9.8	8.9								
27	5.7	5.9	6	5.5	5.3	5.3	5.4	5.4	5.5	5.6	5.7	5.6	27	9.1	9.1	9.3	9.5	9.7	10	10.3	10.3	10.8	9.8	9.8	8.9								
28	5.7	6	6	5.5	5.3	5.3	5.5	5.4	5.6	5.6	5.6	5.6	28	9.1	9.1	9.2	9.5	9.6	10	10.3	10.4	10.7	9.7	9.7	8.8								
29	5.7	6	6	5.5	5.3	5.3	5.4	5.4	5.6	5.6	5.6	5.6	29	9.1	9.1	9.1	9.5	9.6	10	10.3	10.4	10.7	9.7	9.7	8.7								
30	5.7	6	6	5.5	5.2	5.4	5.6	5.4	5.6	5.6	5.6	5.6	30	9.1	9.1	9.1	9.5	9.5	10	10.3	10.4	10.8	9.7	9.7	8.6								
31	5.7	6	6	5.5	5.2	5.4	5.6	5.4	5.6	5.6	5.6	5.6	31	9.1	9.1	9.1	9.5	9.5	10	10.3	10.4	10.8	9.7	9.7	8.7								
Dan	23	1	19	24	16	1	1	1	1	14	6	22	Dan	13	12	1	6	6	1	5	11	5	27	1	30								
Tnk	5.5	5.7	5.2	5.5	5.2	5.2	5.3	5.4	5.4	5.4	5.5	5.5	Tnk	9	8.8	9	9	9.3	9.6	9.9	10.2	10.3	9.7	9.7	8.5								
Ts	5.7	5.8	5.9	5.8	5.3	5.3	5.4	5.4	5.5	5.5	5.6	5.6	Ts	9.3	9	9.2	9.3	9.5	9.9	10.2	10.3	10.5	10.4	9.8	9.3								
Tvk	5.9	6.1	6.2	6.2	5.5	5.5	5.8	6.2	6.1	5.7	5.7	5.8	Tvk	9.9	9.2	9.5	9.6	9.8	10.1	10.4	10.4	10.9	10.9	10	9.8								
Dan	27	14	26	2	1	11	30	17	18	29	1	4	Dan	2	6	26	30	27	27	5	3	30	6	24	3								
Tnk	5.2			Ts			5.6			Tvk			6.2			Tnk			8.5			Ts			9.7			Tvk			10.9		



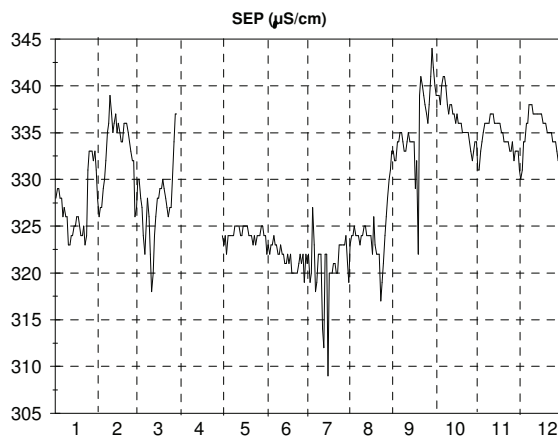
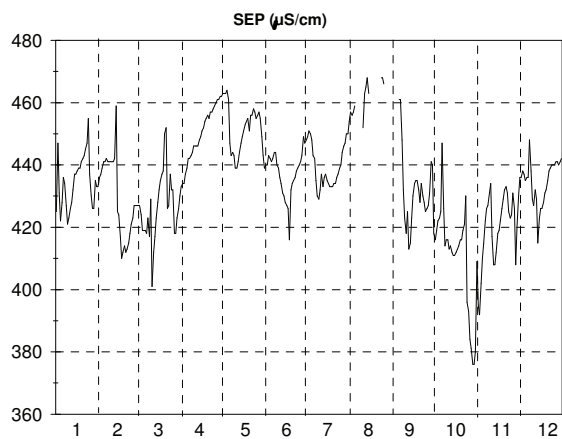
C. 4. Dnevne temperature vode s termogramom (I. 2007)

Št.: 5 Letošč Letožnik												Št.: 6 Izvir Podroteja													
Šif: 6253 Tip: P			Kota"0": ---									Šif: 8453 Tip: P			Kota"0": 327.78										
Dan	1	2	3	4	5	6	7	8	9	10	11	12	Dan	1	2	3	4	5	6	7	8	9	10	11	12
1	8	8	8		7.9	8.1	8.1	8.1	7.9	7.9	7.9	7.9	1	8.3	8.2	8.2	8.3	8.6	8.7	8.8	8.9	8.9	8.5	8.4	8.2
2	8	7.9	7.9		7.9	8	8.1	8.1	7.9	7.9	7.9	7.9	2	8.4	8.2	8.2	8.3	8.6	8.7	8.8	8.9	8.9	8.5	8.4	8.2
3	7.9	8	7.9		7.9	8.1	8.1	8.1	8	7.9	7.9	7.9	3	8.3	8.2	8.2	8.3	8.6	8.7	8.7	8.9	8.9	8.5	8.4	8.3
4	7.9	8	7.9		7.9	8.1	8.1	8.1	8	7.9	7.9	7.9	4	8.2	8.2	8.3	8.3	8.6	8.6	8.8	8.9	9	8.5	8.4	8.3
5	7.9	8	7.9		7.9	8.1	8.1	8.1	7.9	7.9	7.9	7.9	5	8.2	8.2	8.3	8.3	8.6	8.7	8.8	8.9	9	8.5	8.4	8.3
6	7.9	8	7.9		7.9	8	8.1	8.1	7.9	7.9	7.9	7.9	6	8.2	8.2	8.3	8.3	8.6	8.7	8.7	8.9	8.9	8.5	8.4	8.3
7	7.9	8	7.9		8	8	8.1	8.1	7.9	7.9	7.9	7.9	7	8.2	8.3	8.3	8.3	8.6	8.7	8.7	8.9	8.9	8.5	8.4	8.2
8	7.9	8.1	7.9		8	8	8.1	8.1	7.9	7.9	7.9	7.9	8	8.2	8.4	8.3	8.3	8.6	8.7	8.7	8.9	8.9	8.5	8.4	8.2
9	8	8.1	7.9		8	8.1	8.1	8.1	7.9	7.9	7.9	8	9	8.2	8.3	8.3	8.3	8.7	8.7	8.7	8.9	8.9	8.5	8.4	8.2
10	8	8.1	7.8		8	8.1	8	8.1	7.9	7.9	7.9	8	10	8.2	8.2	8.3	8.3	8.7	8.7	8.8	9	8.9	8.5	8.4	8.2
11	8	8	7.8		8	8.1	8	8.1	7.9	7.9	7.9	7.9	11	8.3	8.2	8.3	8.4	8.7	8.7	8.8	9	8.9	8.5	8.4	8.2
12	8	8	7.8		8	8.1	8	8.1	7.9	7.9	7.9	7.9	12	8.3	8.2	8.3	8.4	8.7	8.7	8.8	8.9	8.8	8.5	8.4	8.2
13	7.9	8	7.8		8	8.1	8.1	8.1	7.9	7.9	7.9	7.9	13	8.3	8.2	8.2	8.4	8.7	8.7	8.8	8.9	8.8	8.5	8.4	8.2
14	7.9	8	7.8		8	8.1	8.1	8.1	7.9	7.9	7.9	7.9	14	8.2	8.2	8.2	8.4	8.7	8.7	8.8	8.9	8.8	8.5	8.3	8.2
15	7.9	8	7.8		8	8.1	8.1	8.1	7.9	7.9	7.9	7.9	15	8.2	8.3	8.2	8.4	8.7	8.7	8.8	8.9	8.8	8.5	8.3	8.2
16	7.9	8	7.8		8	8.1	8.1	8.2	7.9	7.9	7.9	7.9	16	8.2	8.3	8.2	8.4	8.7	8.6	8.8	8.9	8.8	8.5	8.3	8.2
17	8	8	7.9		8	8.1	8.1	8.2	7.9	7.9	7.9	7.9	17	8.2	8.3	8.3	8.5	8.8	8.6	8.8	8.9	8.8	8.5	8.3	8.2
18	8	8	7.9		8	8.1	8.1	8.1	8.1	7.9	7.9	7.9	18	8.2	8.3	8.3	8.5	8.8	8.7	8.8	8.9	8.9	8.5	8.3	8.2
19	8	8	7.9		8	8.1	8.1	8.1	7.9	7.9	7.9	7.9	19	8.2	8.3	8.3	8.5	8.7	8.7	8.8	9	8.9	8.5	8.3	8.2
20	8	8	7.9		8	8.1	8.1	8.1	7.9	7.9	7.9	7.9	20	8.3	8.3	8.3	8.5	8.7	8.7	8.8	9	8.7	8.5	8.3	8.2
21	8	8	7.9		8	8.1	8.1	8	7.9	7.9	8	7.9	21	8.3	8.2	8.3	8.5	8.7	8.7	8.8	9	8.7	8.5	8.3	8.2
22	7.9	8	7.9		8.1	8.1	8.1	8	7.8	7.9	8	7.9	22	8.3	8.2	8.3	8.5	8.7	8.7	8.9	9.1	8.7	8.5	8.3	8.2
23	7.9	8	7.9		8.1	8	8.1	8	7.8	7.9	8	7.9	23	8.3	8.3	8.3	8.5	8.8	8.7	8.9	9.1	8.7	8.5	8.3	8.2
24	8.1	8	7.9		8.1	8.1	8.1	7.9	7.8	7.9	8	7.9	24	8.3	8.3	8.3	8.5	8.8	8.7	8.9	9.1	8.7	8.4	8.3	8.2
25	8.1	8	7.9		8.1	8.1	8.1	7.9	7.9	8	8	7.9	25	8.3	8.3	8.3	8.5	8.8	8.7	8.9	8.9	8.7	8.4	8.4	8.2
26	8	8	8		8.1	8.1	8.1	7.9	7.9	8	8	7.9	26	8.2	8.3	8.3	8.5	8.8	8.7	8.9	8.9	8.7	8.5	8.4	8.2
27	8	8	8		8.1	8	8.1	7.9	7.9	8	8	7.9	27	8.2	8.2	8.3	8.6	8.8	8.7	8.9	8.9	8.8	8.5	8.3	8.2
28	8	7.9	8		8	8.1	8.1	7.9	8	7.9	7.9	7.9	28	8.2	8.2	8.3	8.6	8.8	8.7	8.9	8.9	8.6	8.5	8.3	8.2
29	8	8	8		8	8.1	8.1	7.9	8	7.9	7.9	7.9	29	8.2	8.3	8.3	8.6	8.7	8.7	8.9	8.9	8.5	8.5	8.3	8.2
30	8	8	8		8	8.1	8.1	7.9	7.9	7.9	7.9	7.8	30	8.2	8.3	8.3	8.6	8.7	8.8	9	8.9	8.5	8.5	8.3	8.2
31	7.9	8	8		8	8.1	8.1	7.9	7.9	7.9	7.9	7.9	31	8.2	8.3	8.3	8.6	8.7	8.7	8.9	8.9	8.7	8.4	8.4	8.2
Dan	1	1	19		1	1	1	23	21	1	1	29	Dan	1	27	1	1	1	16	2	1	28	24	14	30
Tnk	7.9	7.9	7.7		7.9	8	8	7.9	7.8	7.9	7.9	7.8	Tnk	8.2	8.1	8.2	8.3	8.6	8.5	8.7	8.9	8.4	8.4	8.3	8.1
Ts	8	8	7.9		8	8.1	8.1	8	7.9	7.9	7.9	7.9	Ts	8.2	8.2	8.3	8.4	8.7	8.7	8.8	8.9	8.8	8.5	8.4	8.2
Tvk	8.1	8.1	8.1		8.2	8.2	8.3	8.9	8.2	8.1	8	8	Tvk	8.6	8.5	8.4	8.6	8.9	8.8	9.2	9.3	9.3	8.7	8.6	8.2
Dan	28	7	27		22	3	18	17	18	6	3	2	Dan	2	8	19	26	27	16	4	23	18	6	25	2
Tnk	7.7				Ts	8				Tvk	8.9		Tnk	8.1			Ts	8.5				Tvk	9.3		



C. 5. Dnevne vrednosti specifične električne prevodnosti z diagramom - v $\mu\text{S/cm}$ (I. 2007)

Št.: 4 Metlika Metliški Obrh												Št.: 5 Letošč Letožnik													
Šif: 4995 Tip: P Kota"0": ----												Šif: 6253 Tip: P Kota"0": ----													
Dan	1	2	3	4	5	6	7	8	9	10	11	12	Dan	1	2	3	4	5	6	7	8	9	10	11	12
1	425	436	427	433	463	440	449	457		416	395	436	1	328	326	330		324	324	321	323	333	340	331	331
2	447	437	427	434	463	440	451	456		419	392	436	2	329	327	330		323	322	322	324	332	339	331	330
3	431	439	424	434	463	443	450	457		422	402	438	3	329	327	328		324	323	319	324	332	339	333	331
4	422	441	419	437	464	442	448	459		423	410	437	4	328	329	327		322	322	320	325	334	339	334	334
5	428	441	419	439	461	441	443		461	425	415	435	5	328	330	324		324	323	327	324	334	338	335	334
6	436	442	419	442	447	442	442		461	447	422	436	6	326	332	322		324	323	323	324	335	340	336	336
7	434	441	418	442	443	444	435		448	426	426	436	7	327	335	325		324	324	318	324	335	341	336	336
8	427	441	423	443	444	444	430		432	414	427	448	8	326	336	328		324	323	319	323	334	341	336	338
9	421	441	417	444	443	440	429		423	416	431	438	9	326	339	326		324	323	322	324	333	340	336	338
10	423	441	429	446	439	439	432	452	418	416	434	429	10	323	337	322		325	322	322	324	333	338	337	338
11	426	441	401	446	439	436	437	463	425	413	417	427	11	323	335	318		325	322	322	325	334	337	337	337
12	428	442	412	446	441	434	433	465	413	414	408	432	12	324	336	320		325	323	314	325	335	338	337	337
13	432	459	417	446	444	431	436	468	415	412	408	429	13	324	337	324		325	322	312	324	334	338	336	337
14	437	425	423	448	447	430	437	463	423	411	412	415	14	325	335	326		324	322	322	324	334	337	336	337
15	437	424	428	449	449	428	435		430	411	418	423	15	325	336	328		324	321	322	324	334	337	336	337
16	438	417	432	451	451	427	434		434	412	419	426	16	326	335	328		325	321	309	324	334	336	336	337
17	439	410	435	452	453	426	433		435	413	422	426	17	326	334	329		325	322	320	322	329	337	336	337
18	439	412	437	454	454	416	433		435	414	426	428	18	325	334	329		325	321	320	326	332	336	335	336
19	441	414	438	455	455	432	433		432	416	429	431	19	324	336	330		325	322	320	323	322	336	335	336
20	442	412	450	456	451	434	434		428	416	432	432	20	324	336	329		324	320	321	322	339	336	334	336
21	443	413	452	455	456	435	434		434	419	433	435	21	325	336	328		324	320	321	322	341	335	334	335
22	445	415	426	457	456	436	436		430	421	431	438	22	323	335	327		324	320	320	322	340	335	334	335
23	447	418	427	457	458	438	437	468	428	430	425	439	23	324	334	326		323	320	320	317	339	335	334	335
24	455	421	437	458	457	439	439	468	425	396	423	440	24	331	333	327		324	320	323	319	338	335	333	335
25	437	423	432	459	455	440	440	466	426	393	424	440	25	333	332	327		323	321	323	321	337	335	333	334
26	430	427	432	460	456	441	444		427	384	431	440	26	333	332	330		324	322	323	324	336	334	334	334
27	426	427	418	461	457	443	446		431	381	426	441	27	333	326	334		324	321	323	326	338	333	332	334
28	426	427	418	461	455	449	447		441	376	408	441	28	332	327	337		324	322	323	328	341	332	333	333
29	435	423	423	462	449	447	450		440	376	420	440	29	333		337		325	319	324	330	344	333	333	332
30	433	426	426	462	443	448	450		418	380	430	441	30	331				325	322	321	331	342	334	333	332
31	433	430	430	439	439	439	454		454	409	442	442	31	328				324		319	333	334	334	333	333
Dan	10	21	11	21	18	24				2	14		Dan	19	1	12		14	29	31	15	13	27	20	31
SEPNk	419	405	399	371	362	412				391	413		SEPNk	292	290	315		292	225	272	281	299	314	317	325
SEPs	434	430	426	450	452	438	440	462	431	410	420	435	SEPs	327	333	327		324	322	321	324	335	337	335	335
SEPVk	481	485	463	467	479	458	455	474	477	486	464	467	SEPVk	338	342	338		326	325	332	334	348	355	339	339
Dan	2	13	21	27	5	28	31	13	4	6	27	9	Dan	24	7	29		10	1	5	31	18	6	26	8
SEPNk			362			SEPs	436			SEPVk	486		SEPNk			225			SEPs	329			SEPVk	355	



C. 5. Dnevne vrednosti specifične električne prevodnosti z diagramom - v $\mu\text{S/cm}$ (I. 2007)

Št.: 6 Izvir Podroteja													
Šif: 8453 Tip: P Kota "0": 327.78													
Dan	1	2	3	4	5	6	7	8	9	10	11	12	
1	335	310	279	303	340	328	322	337	339	319	321	313	
2	323	312	284	299	339	320	323	339	340	324	320	314	
3	294	320	287	303	338	323	320	340	341	327	322	316	
4	286	322	294	303	343	336	324	343	343	327	323	309	
5	291	322	298	305	352	336	321	342	347	328	328	303	
6	294	323	300	307	352	338	318	344	348	329	331	302	
7	299	315	302	312	350	337	321	346	348	333	330	306	
8	299	308	303	323	346	334	322	348	347	329	332	308	
9	300	270	296	327	343	336	326	349	347	335	331	306	
10	301	259	294	327	341	336	332	349	347	333	336	306	
11	306	268	303	328	343	335	330	348	350	331	331	308	
12	302	283	304	326	343	333	329	346	350	330	331	307	
13	295	277	303	325	343	333	327	345	348	331	332	310	
14	297	276	304	326	344	333	326	346	339	334	331	314	
15	301	283	306	327	344	334	326	347	338	336	333	316	
16	303	290	314	328	347	333	327	347	340	336	333	319	
17	303	292	324	330	349	314	328	349	343	336	334	321	
18	305	297	326	332	347	299	329	350	346	336	335	322	
19	304	303	320	333	346	304	329	350	339	337	335	324	
20	306	306	310	334	348	306	330	350	334	338	334	325	
21	305	306	305	333	349	309	332	350	333	338	334	326	
22	308	308	311	334	352	308	333	351	336	338	334	327	
23	301	306	309	335	355	308	335	351	333	340	339	329	
24	290	307	312	336	354	309	336	346	338	342	333	330	
25	291	306	315	336	355	312	336	340	342	348	327	331	
26	290	287	314	335	359	314	339	333	342	350	314	331	
27	296	250	313	335	360	316	341	333	339	340	304	331	
28	301	263	306	335	360	318	342	333	325	332	307	330	
29	305		309	338	353	319	344	337	328	326	315	332	
30	306		308	339	339	321	346	339	316	325	314	333	
31	308		307		329		342	340		321		332	
Dan	4	9	1	2	10	18	5	27	28	1	27	5	
SEPNk	283	248	272	296	315	298	314	330	296	316	302	299	
SEPs	301	295	305	325	347	323	330	344	340	333	327	319	
SEPVk	350	325	335	346	364	357	351	354	359	354	346	336	
Dan	2	6	19	30	28	16	30	23	18	26	25	30	
SEPNk	248			SEPs			324			SEPVk			364

