

C. IZVIRI

C. SPRINGS

C.0. POJASNILA K PREGLEDNICAM

V poglavju o monitoringu izvirov (C) so poleg Pojasnil k preglednicam (C.0.) s predstavitvijo merjenih parametrov, podani še tri podpoglavja s preglednicami.

V letu 2002 so v programu monitoringa izvirov neprekinjeno delovale postaje na izvirih Divje jezero, Kamniška Bistrica in Podroteja. Za vse tri postaje podajamo v preglednicah dnevne vrednosti vodostajev (C.1.), temperatur (C.2.) in specifične električne prevodnosti (C.3.) ter njihove diagrame.

Razlage pojmov in okrajšav v preglednicah:

- **Št.** – tekoča številka izvira;
- **Tip** – opremljenost postaje (**P** – podatkovni zapisovalnik);
- **Postaja** – ime postaje za izvir oz. lokacija;
- **Izvir** – ime izvira;
- **Kota »0«** – nadmorska višina nulte točke, od koder se meri višina vodnega stolpca oz. vodostaj;
- **X in Y** – Gauss-Kruegerjeve koordinate položaja postaje na topografski karti merila 1:25000;
- **Začetek opazovanj** – začetno leto merjenj podatkov;
- **Stran** – stran, na kateri so za postajo izvira navedeni podatki o vodostajih (**H**), temperaturi (**T**) in specifični električni prevodnosti (**EP**);
- ---- – ni podatka;
- **Hnk** – najnižji mesečni oz. letni vodostaj;
- **Hs** – srednje mesečni oz. letni vodostaj;
- **Hvk** – najvišji mesečni oz. letni vodostaj;
- **Tnk** – najnižja mesečna oz. letna temperatura;
- **Ts** – srednja mesečna oz. letna temperatura;
- **Tvk** – najvišja mesečna oz. letna temperatura;
- **EPnk** – najnižja mesečna oz. letna vrednost specifične električne prevodnosti;
- **EPs** – srednje mesečna oz. letna vrednost specifične električne prevodnosti;
- **EPvk** – najvišja mesečna oz. letna vrednost specifične električne prevodnosti.

Seznam postaj za izvire (l. 2002)

Št.	Tip	Postaja	Izvir	Kota "0"	Y	X	Pričetek opazovanj	Stran		
								H	T	EP
1	P	DIVJE JEZERO	DIVJE JEZERO	327.168	5 425 080	5 093 580	1999	199	201	203
2	P	IZVIR	KAMNIŠKA BISTRICA	----	5 131 580	5 468 815	2001	199	201	203
3	P	IZVIR	PODROTEJA	327.796	5 425 200	5 093 980	1999	200	202	204

C.0. EXPLANATION TO THE TABLES

In the chapter on the monitoring of springs (C) three sections containing tables were added to the Explanation to the Tables (C.0.) including a presentation of measured parameters.

Three gauging stations on locations Divje jezero, Kamniška Bistrica and Podroteja were in operation in the year 2002. Data on daily water levels for these localities are listed in C.1., daily values of temperatures in C.2., and values of specific electrical conductivity are listed in the tables in C.3. along with graphs.

Explanation of terms and abbreviations used in the tables:

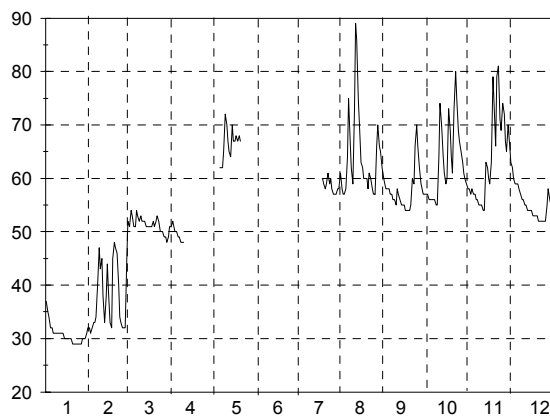
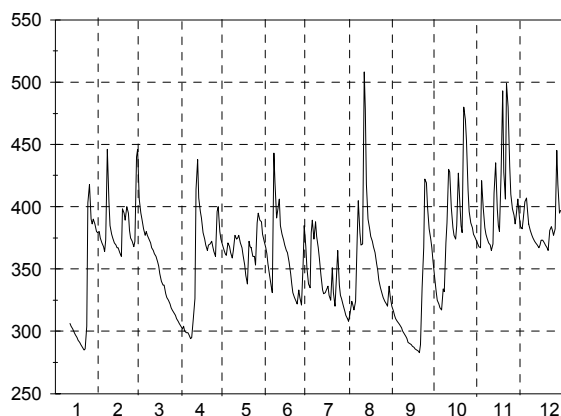
- **Št.** (No.) – current number of the spring;
- **Tip** (Type) – equipment at the station (**P** – data logger);
- **Postaja** (Station) – name of the station for a spring or location;
- **Izvir** – the name of the spring;
- **Kota »0«** (datum point) – altitude of point zero used as a reference for measuring water level;
- **X in Y** – Gauss-Krueger co-ordinates of the station's position on the topographical map, scale 1:25000;
- **Začetek opazovanj** (Beginning of observations) – the first year of measuring data;
- **Stran** (Page) – the page listing the data on water levels (**H**), temperature (**T**) and specific electrical conductivity (**EP**);
- ---- – no data;
- **Hnk** – lowest monthly and annual water levels;
- **Hs** – mean monthly and annual water levels;
- **Hvk** – highest monthly and annual water levels;
- **Tnk** – lowest monthly and annual temperatures;
- **Ts** – mean monthly and annual temperatures;
- **Tvk** – highest monthly and annual temperatures;
- **Epnk** – lowest monthly and annual values of the specific electrical conductivity;
- **Eps** – mean monthly and annual values of the specific electrical conductivity;
- **Epvk** – highest monthly and annual values of the specific electrical conductivity.

List of gauging stations for springs (2002)

Št.	Tip	Postaja	Izvir	Kota "0"	Y	X	Pričetek opazovanj	Stran		
								H	T	EP
1	P	DIVJE JEZERO	DIVJE JEZERO	327.168	5 425 080	5 093 580	1999	199	201	203
2	P	IZVIR	KAMNIŠKA BISTRICA	----	5 131 580	5 468 815	2001	199	201	203
3	P	IZVIR	PODROTEJA	327.796	5 425 200	5 093 980	1999	200	202	204

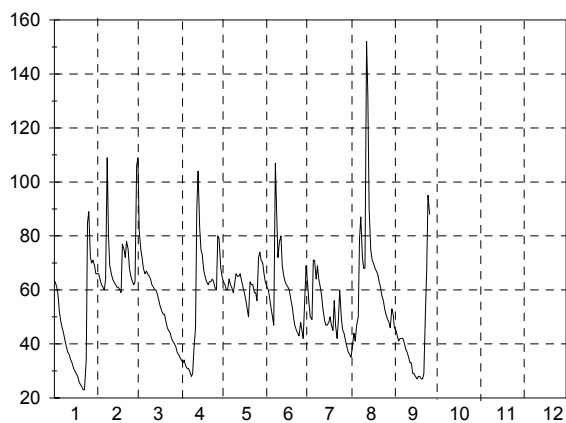
C.1. Dnevni vodostaji z nivogramom (I. 2002)

Št.: 1 DIVJE JEZERO DIVJE JEZERO												Št.: 2 IZVIR KAMNIŠKA BISTRICA													
Vodostaj v cm												Vodostaj v cm													
Tip: P												Tip: P													
Kota"0": 327.168												Kota"0":													
Dan	1	2	3	4	5	6	7	8	9	10	11	12	Dan	1	2	3	4	5	6	7	8	9	10	11	12
1		380	446	304	369	367	351	315	316	344	370	391	1	37	32	52	51			61	60	57	58	66	
2		375	406	302	365	362	338	324	313	332	368	384	2	35	31	51	52			58	59	57	58	63	
3		371	395	304	362	354	335	321	310	325	367	382	3	34	32	54	51			57	58	57	57	62	
4		368	390	300	361	345	379	317	308	322	421	390	4	32	33	53	50			57	58	56	58	60	
5		364	382	299	371	336	389	324	306	319	399	404	5	32	33	51	50			58	58	56	57	59	
6		373	377	299	368	331	374	375	305	317	383	407	6	31	34	51	49	62		64	57	56	57	59	
7		446	380	297	363	443	388	405	303	334	378	396	7	31	40	54	49	62		75	57	56	56	59	
8		404	377	294	359	419	376	379	300	332	375	386	8	31	47	53	48	62		67	56	56	56	58	
9		385	374	295	365	391	367	369	298	371	371	381	9	31	43	52	48	65		62	56	55	55	57	
10		378	371	310	377	400	359	370	296	387	369	377	10	31	45	53	48	72		59	55	55	55	56	
11	306	375	367	326	374	406	345	508	294	430	365	375	11	31	38	52		70		73	58	64	55	56	
12	304	371	365	414	375	385	333	478	291	428	370	372	12	31	33	52		67		89	57	74	54	55	
13	302	369	362	438	377	378	330	418	290	399	411	371	13	31	38	52		65		86	56	70	54	55	
14	299	367	360	407	371	373	331	390	289	383	435	369	14	30	44	51		64		75	55	64	63	54	
15	297	367	356	396	367	369	333	382	288	377	398	367	15	30	39	51		70		68	55	61	62	54	
16	295	363	352	391	361	365	336	376	287	374	385	369	16	30	33	51		67		63	55	59	60	54	
17	293	360	346	379	353	363	329	372	286	385	380	373	17	30	32	51		67		62	54	60	59	54	
18	291	398	340	374	345	356	325	368	285	427	426	373	18	30	45	51		68		60	54	73	63	53	
19	289	395	337	369	338	346	351	363	284	401	493	371	19	30	48	52		67	60	60	54	69	79	53	
20	287	389	337	365	372	338	331	354	283	385	428	369	20	29	47	51		68	59	60	54	64	74	53	
21	285	400	330	369	368	331	320	349	289	379	406	367	21	29	46	52		67		58	58	55	61	66	53
22	286	395	327	370	367	327	338	341	335	480	499	365	22	29	40	53				59	61	60	73	79	52
23	304	381	325	372	360	324	365	335	367	470	480	381	23	29	34	52				61	60	59	80	81	52
24	403	375	322	368	360	322	337	330	422	453	432	384	24	29	33	50				59	58	66	75	71	52
25	418	372	319	364	353	333	329	327	419	413	410	381	25	29	32	50				60	57	70	69	69	52
26	390	368	317	360	387	327	326	324	400	396	398	377	26	29	32	50				58	57	66	67	74	52
27	386	372	315	396	395	321	321	322	382	387	393	382	27	30	32	49				57	66	62	65	72	52
28	390	440	313	400	389	354	316	320	374	383	386	445	28	30	45	49				57	70	59	63	67	55
29	386		310	380	388	385	313	336	367	378	393	418	29	30		48				57	66	58	61	65	58
30	380		308	374	378	368	310	328	357	376	406	395	30	31		49				58	65	57	60	70	56
31	379		306		372		308	320		373		397	31	32		51				58	62		59		55
Dan	22	17	31	8	19	28	31	1	20	6	11	22	Dan	21	2	28	8	7	29	4	19	10	13	21	
Hnk	283	358	305	292	334	317	306	306	281	315	364	365	Hnk	28	31	47	48	61	56	56	53	55	54	51	
Hs	332	382	352	354	368	361	341	359	321	383	403	384	Hs	31	38	51	50	66	58	64	58	63	63	56	
Hvk	453	508	500	447	413	497	434	554	433	538	532	461	Hvk	39	51	54	52	75	63	93	72	84	87	68	
Dan	24	28	1	13	26	7	4	11	23	22	22	28	Dan	1	28	3	1	10	22	12	25	22	22	1	
Hnk			281			Hs			363			Hvk						Hs		54			Hvk	93	



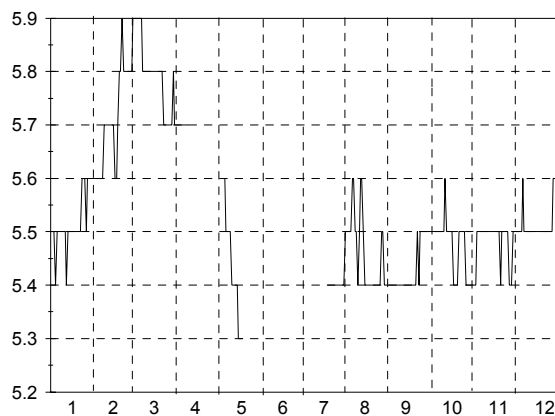
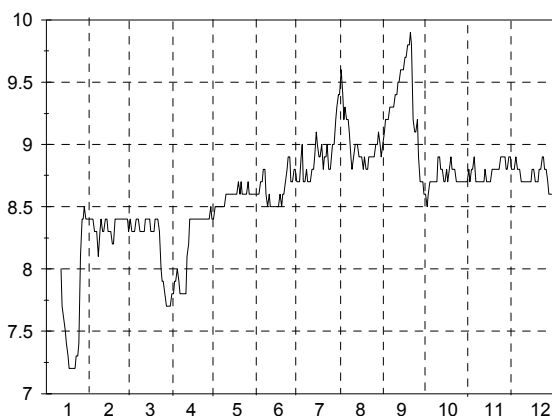
C.1. Dnevni vodostaji z nivogramom (I. 2002)

Št.: 3 IZVIR PODROTEJA												
Vodostaj v cm			Tip: P			Kota"0": 327.796						
Dan	1	2	3	4	5	6	7	8	9	10	11	12
1	63	66	109	34	63	61	55	39	45			
2	61	64	82	33	62	60	50	44	43			
3	58	62	75	34	60	57	49	41	41			
4	52	61	72	32	60	53	71	47	42			
5	48	60	68	31	64	50	71	50	42			
6	46	64	66	31	62	47	64	79	42			
7	44	109	67	30	61	107	69	87	40			
8	41	80	66	28	59	89	64	72	38			
9	39	69	65	29	62	72	61	68	37			
10	37	66	64	38	66	78	58	68	35			
11	36	64	62	46	65	80	53	152	33			
12	34	63	61	90	65	69	49	132	33			
13	33	62	60	104	66	65	47	90	29			
14	31	61	60	83	63	63	47	75	29			
15	30	61	58	75	61	62	48	71	28			
16	29	60	56	73	59	61	50	70	27			
17	28	59	54	67	56	60	47	68	28			
18	26	77	52	65	53	57	45	67	28			
19	25	75	51	63	50	54	56	66	27			
20	24	72	51	62	63	50	47	63	27			
21	23	78	48	63	62	47	42	61	29			
22	23	75	46	63	62	45	49	58	52			
23	34	68	45	64	59	44	60	56	68			
24	85	65	44	63	59	43	49	53	95			
25	89	63	42	61	56	48	45	51	88			
26	72	62	41	60	72	45	44	49				
27	70	63	40	80	74	42	41	48				
28	71	106	39	79	71	57	39	46				
29	69		37	68	70	69	37	53				
30	66		36	65	66	62	36	51				
31	66		35		63		35	46				
Dan	22	17	31	8	19	28	31	1	20			
Hnk	21	57	34	26	48	40	33	33	23			
Hs	47	69	56	57	62	60	51	65	40			
Hvk	115	154	148	111	86	144	104	178	103			
Dan	24	28	1	13	26	7	4	11	23			
Hnk			21									
Hs							57					
Hvk												178



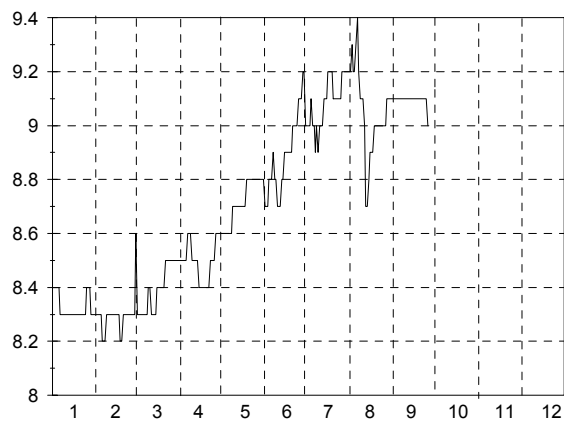
C.2. Dnevne vrednosti temperatur s termogramom (I. 2002)

Št.: 1 DIVJE JEZERO DIVJE JEZERO													Št.: 2 IZVIR KAMNIŠKA BISTRICA												
Temperatura v oC													Temperatura v oC												
Tip: P													Tip: P												
Kota"0": 327.168													Kota"0":												
Dan	1	2	3	4	5	6	7	8	9	10	11	12	Dan	1	2	3	4	5	6	7	8	9	10	11	12
1		8.4	8.3	7.8	8.4	8.6	8.7	9.6	9.1	8.6	8.8	8.9	1	5.5	5.6	5.9	5.7			5.5	5.4	5.5	5.4	5.5	
2		8.4	8.4	7.8	8.5	8.6	8.7	9.4	9.2	8.5	8.7	8.8	2	5.5	5.6	5.9	5.7			5.5	5.4	5.5	5.4	5.5	
3		8.4	8.3	7.9	8.5	8.6	8.9	9.2	9.2	8.6	8.8	8.8	3	5.5	5.6	5.9	5.7			5.5	5.4	5.5	5.4	5.5	
4		8.3	8.3	7.9	8.5	8.7	9.0	9.3	9.2	8.7	8.8	8.8	4	5.4	5.6	5.9	5.7			5.5	5.4	5.5	5.5	5.5	
5		8.3	8.3	8.0	8.5	8.7	8.7	9.2	9.3	8.7	8.9	8.9	5	5.5	5.6	5.9	5.7			5.5	5.4	5.5	5.5	5.5	
6		8.3	8.4	7.9	8.5	8.8	8.7	9.2	9.3	8.7	8.7	8.8	6	5.5	5.6	5.9	5.7	5.6		5.6	5.4	5.5	5.5	5.5	
7		8.1	8.4	7.8	8.5	8.8	8.8	9.1	9.3	8.7	8.7	8.8	7	5.5	5.6	5.9	5.7	5.5		5.6	5.4	5.5	5.5	5.6	
8		8.3	8.4	7.8	8.5	8.6	8.7	8.9	9.3	8.7	8.7	8.8	8	5.5	5.7	5.8	5.7	5.5		5.5	5.4	5.5	5.5	5.5	
9		8.4	8.3	7.8	8.5	8.5	8.7	8.8	9.4	8.7	8.7	8.7	9	5.5	5.7	5.8	5.7	5.5		5.5	5.4	5.5	5.5	5.5	
10		8.3	8.3	7.8	8.6	8.6	8.7	8.9	9.4	8.9	8.7	8.7	10	5.5	5.7	5.8	5.7	5.5		5.4	5.4	5.5	5.5	5.5	
11	8.0	8.3	8.3	7.8	8.6	8.5	8.8	9.0	9.5	8.9	8.7	8.7	11	5.5	5.7	5.8		5.4		5.5	5.4	5.5	5.5	5.5	
12	7.7	8.4	8.3	8.1	8.6	8.5	8.8	9.0	9.5	8.8	8.7	8.7	12	5.4	5.7	5.8		5.4		5.6	5.4	5.6	5.5	5.5	
13	7.6	8.4	8.4	8.2	8.6	8.5	8.9	9.0	9.6	8.8	8.8	8.7	13	5.5	5.7	5.8		5.4		5.6	5.4	5.5	5.5	5.5	
14	7.5	8.3	8.4	8.4	8.6	8.5	9.1	8.9	9.6	8.7	8.7	8.7	14	5.5	5.7	5.8		5.4		5.5	5.4	5.5	5.5	5.5	
15	7.4	8.3	8.4	8.4	8.6	8.5	9.0	8.9	9.6	8.7	8.7	8.7	15	5.5	5.7	5.8		5.4		5.4	5.4	5.5	5.5	5.5	
16	7.3	8.3	8.4	8.4	8.6	8.5	8.9	8.9	9.7	8.8	8.7	8.7	16	5.5	5.6	5.8		5.3		5.4	5.4	5.5	5.5	5.5	
17	7.2	8.2	8.3	8.4	8.6	8.5	8.9	8.8	9.7	8.7	8.7	8.8	17	5.5	5.6	5.8		5.3		5.4	5.4	5.5	5.5	5.5	
18	7.2	8.2	8.3	8.4	8.6	8.6	9.0	8.9	9.8	8.8	8.8	8.8	18	5.5	5.7	5.8		5.3		5.4	5.4	5.4	5.5	5.5	
19	7.2	8.4	8.3	8.4	8.7	8.5	8.8	8.8	9.8	8.9	8.8	8.7	19	5.5	5.8	5.8		5.3	5.4	5.4	5.4	5.4	5.5	5.5	
20	7.2	8.4	8.4	8.4	8.6	8.6	8.9	8.8	9.9	8.8	8.8	8.7	20	5.5	5.8	5.8			5.4	5.4	5.4	5.4	5.5	5.5	
21	7.2	8.4	8.4	8.4	8.7	8.6	8.9	8.9	9.8	8.8	8.8	8.7	21	5.5	5.9	5.8				5.4	5.4	5.4	5.4	5.5	
22	7.3	8.4	8.4	8.4	8.6	8.7	9.0	8.9	9.2	8.8	8.8	8.8	22	5.5	5.8	5.8				5.4	5.4	5.5	5.5	5.5	
23	7.3	8.4	8.3	8.4	8.6	8.8	8.8	8.9	9.1	8.7	8.8	8.8	23	5.6	5.8	5.7				5.4	5.4	5.4	5.5	5.5	
24	7.4	8.4	8.0	8.4	8.6	8.9	8.8	8.9	9.1	8.7	8.9	8.9	24	5.6	5.8	5.7				5.4	5.4	5.5	5.5	5.5	
25	8.1	8.4	7.9	8.4	8.6	8.9	8.9	8.9	9.2	8.7	8.9	8.9	25	5.6	5.8	5.7				5.4	5.4	5.5	5.5	5.5	
26	8.4	8.4	7.9	8.4	8.7	8.7	9.0	9.0	8.9	8.7	8.9	8.8	26	5.5	5.8	5.7				5.4	5.4	5.5	5.5	5.5	
27	8.4	8.4	7.8	8.4	8.6	8.7	9.0	9.0	8.7	8.7	8.9	8.8	27	5.6	5.8	5.7				5.4	5.5	5.5	5.4	5.4	5.5
28	8.5	8.4	7.7	8.4	8.6	8.8	9.2	9.1	8.7	8.7	8.8	8.7	28	5.6	5.8	5.7				5.4	5.5	5.5	5.4	5.4	5.5
29	8.4		7.7	8.5	8.6	8.8	9.3	9.0	8.7	8.7	8.8	8.6	29	5.6		5.7				5.4	5.4	5.5	5.4	5.4	5.6
30	8.4		7.7	8.4	8.6	8.7	9.4	8.9	8.6	8.7	8.9	8.6	30	5.6		5.8				5.4	5.4	5.5	5.4	5.5	5.6
31	8.4		7.7		8.6		9.4	9.0		8.7		8.6	31	5.6		5.7				5.4	5.4		5.4	5.6	
Dan	24	11	28	1	1	1	1	8	28	1	1	30	Dan	3	16	14	1	13	19	5	1	8	1	3	
Tnk	7	7.8	7.6	7.7	8.4	8.5	8.7	8.8	8.6	8.5	8.7	8.5	Tnk	5.4	5.4	5.7	5.7	5.3	5.4	5.4	5.4	5.4	5.4	5.4	
Ts	7.7	8.3	8.2	8.2	8.6	8.6	8.9	9.0	9.3	8.7	8.8	8.8	Ts	5.5	5.7	5.8	5.7	5.4	5.4	5.5	5.4	5.5	5.5	5.5	
Tvk	8.7	8.7	8.6	8.7	8.9	14.4	13.6	13.2	11.2	9.7	9.6	9.2	Tvk	5.9	6	6	5.9	5.7	5.6	5.8	5.6	5.6	5.6	5.6	
Dan	26	13	14	24	9	28	22	2	25	16	5	7	Dan	25	22	9	1	6	30	6	24	1	19	6	
Tnk			7					8.6				14.4	Tnk			5.3				5.5				6	



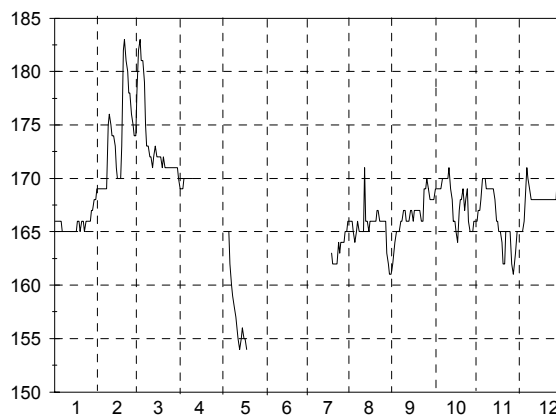
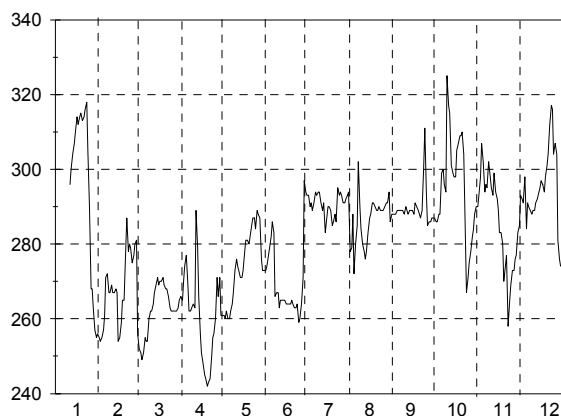
C.2. Dnevne vrednosti temperatur s termogramom (l. 2002)

Št.: 3 IZVIR PODROTEJA												
Temperatura v oC			Tip: P			Kota"0": 327.796						
Dan	1	2	3	4	5	6	7	8	9	10	11	12
1	8.4	8.3	8.6	8.5	8.6	8.7	9.0	9.2	9.1			
2	8.4	8.3	8.3	8.5	8.6	8.7	9.0	9.3	9.1			
3	8.4	8.3	8.3	8.5	8.6	8.7	9.0	9.2	9.1			
4	8.4	8.3	8.3	8.5	8.6	8.8	9.1	9.2	9.1			
5	8.4	8.2	8.3	8.5	8.6	8.8	9.0	9.3	9.1			
6	8.3	8.2	8.3	8.5	8.6	8.8	9.0	9.4	9.1			
7	8.3	8.2	8.3	8.6	8.6	8.9	8.9	9.2	9.1			
8	8.3	8.3	8.3	8.6	8.6	8.8	9.0	9.1	9.1			
9	8.3	8.3	8.3	8.6	8.7	8.8	8.9	9.1	9.1			
10	8.3	8.3	8.4	8.5	8.7	8.7	9.0	9.1	9.1			
11	8.3	8.3	8.4	8.5	8.7	8.7	9.0	9.0	9.1			
12	8.3	8.3	8.3	8.5	8.7	8.7	9.0	8.7	9.1			
13	8.3	8.3	8.3	8.5	8.7	8.8	9.1	8.7	9.1			
14	8.3	8.3	8.3	8.5	8.7	8.8	9.1	8.8	9.1			
15	8.3	8.3	8.3	8.4	8.7	8.9	9.1	8.9	9.1			
16	8.3	8.3	8.4	8.4	8.7	8.9	9.2	8.9	9.1			
17	8.3	8.3	8.4	8.4	8.7	8.9	9.2	8.9	9.1			
18	8.3	8.2	8.4	8.4	8.7	8.9	9.2	9.0	9.1			
19	8.3	8.2	8.4	8.4	8.8	8.9	9.2	9.0	9.1			
20	8.3	8.3	8.4	8.4	8.8	8.9	9.1	9.0	9.1			
21	8.3	8.3	8.4	8.4	8.8	9.0	9.1	9.0	9.1			
22	8.3	8.3	8.5	8.4	8.8	9.0	9.1	9.0	9.1			
23	8.3	8.3	8.5	8.5	8.8	9.0	9.1	9.0	9.1			
24	8.3	8.3	8.5	8.5	8.8	9.0	9.1	9.0	9.1			
25	8.4	8.3	8.5	8.5	8.8	9.1	9.1	9.0	9.0			
26	8.4	8.3	8.5	8.5	8.8	9.1	9.2	9.0				
27	8.4	8.3	8.5	8.6	8.8	9.1	9.2	9.1				
28	8.3	8.3	8.5	8.6	8.8	9.2	9.2	9.1				
29	8.3		8.5	8.6	8.8	9.2	9.2	9.1				
30	8.3		8.5	8.6	8.8	9.0	9.2	9.1				
31	8.3		8.5		8.8		9.2	9.1				
Dan	24	4	2	12	1	7	6	12	24			
Tnk	8.2	8.2	8.3	8.4	8.6	8.6	8.9	8.6	9			
Ts	8.3	8.3	8.4	8.5	8.7	8.9	9.1	9.0	9.1			
Tvk	8.4	8.4	8.8	8.6	8.9	9.6	9.6	9.8	9.4			
Dan	1	22	1	6	26	28	4	6	23			
Tnk		8.2					8.7					9.8



C.3. Dnevne vrednosti specifične električne prevodnosti z diagramom (I. 2002)

Št.: 1 DIVJE JEZERO DIVJE JEZERO												Št.: 2 IZVIR KAMNIŠKA BISTRICA													
EP v mikro S/cm			Tip: P			Kota"0": 327.168						EP v mikro S/cm			Tip: P			Kota"0":							
Dan	1	2	3	4	5	6	7	8	9	10	11	12	Dan	1	2	3	4	5	6	7	8	9	10	11	12
1		255	256	266	261	273	293	278	288	287	290	285	1	166	169	178	169			166	162	168	166	165	
2		254	252	265	261	274	293	279	288	286	293	293	2	166	169	182	169			166	163	169	167	165	
3		255	251	270	260	276	290	288	288	286	298	292	3	166	169	183	169			166	164	169	167	165	
4		257	249	274	262	279	291	272	289	288	307	291	4	166	169	181	170			165	165	169	168	165	
5		261	251	277	260	282	289	280	289	288	302	298	5	166	169	181	170			164	165	169	170	166	
6		271	255	269	260	286	291	285	289	299	294	284	6	165	169	179	170	165		165	165	169	170	169	
7		272	254	262	262	283	294	302	289	300	296	291	7	165	169	175	170	162		166	166	170	170	171	
8		267	254	262	264	266	293	290	289	296	295	290	8	165	175	173	170	160		165	166	170	169	170	
9		267	260	263	267	267	294	284	288	294	302	289	9	165	176	173	170	159		165	167	170	169	169	
10		269	262	264	273	267	294	280	290	325	298	288	10	165	175	172	170	158		165	167	170	169	168	
11	296	267	262	263	276	263	291	278	289	317	295	289	11	165	174	172		157		165	166	170	169	168	
12	300	267	264	289	274	265	289	276	288	315	293	289	12	165	174	171		156		171	166	171	169	168	
13	304	268	267	279	273	265	291	278	289	301	299	291	13	165	173	172		155		166	166	169	169	168	
14	307	267	269	266	271	265	283	283	289	299	294	292	14	165	171	173		154		166	167	168	168	168	
15	310	254	271	256	271	265	286	287	289	298	292	294	15	165	170	172		155		165	167	166	166	168	
16	314	255	269	251	273	264	290	288	288	298	289	295	16	165	170	172		156		166	166	166	166	168	
17	312	259	270	248	278	264	290	291	291	305	283	297	17	166	170	172		155		166	167	165	165	168	
18	314	265	270	245	281	264	289	291	290	307	283	296	18	166	173	172		155		166	167	164	165	168	
19	315	265	271	244	281	264	285	290	289	309	280	294	19	165	182	171		154	163	166	167	167	164	168	
20	313	274	269	242	280	265	286	289	288	309	270	298	20	166	183	172			162	166	167	168	162	168	
21	314	287	268	243	282	264	288	289	287	310	274	301	21	166	181	171				162	167	167	168	162	168
22	316	278	268	244	284	263	286	290	289	304	277	304	22	165	180	171				162	167	166	169	165	168
23	318	280	266	250	287	263	295	289	301	282	258	312	23	166	178	171				162	166	166	167	165	168
24	305	279	263	255	287	264	293	289	311	267	265	317	24	166	178	171				164	166	169	168	165	168
25	290	275	262	256	284	259	294	289	293	271	269	316	25	166	176	171				163	166	169	169	165	168
26	268	277	262	260	289	260	293	290	285	275	273	304	26	166	175	171				164	166	170	166	162	168
27	268	280	262	271	288	264	291	291	286	278	273	307	27	167	174	171				164	166	169	165	161	168
28	263	281	262	266	287	271	291	291	286	282	276	304	28	167	174	171				164	163	168	165	162	168
29	257	262	262	271	276	297	292	294	287	284	277	281	29	168		171				165	162	168	165	163	170
30	255	263	263	261	273	294	293	286	287	288	283	276	30	168		171				165	161	168	166	165	170
31	256	265	265	273			294	288		290	274		31	169		170				166	161		166		170
Dan	30	1	4	21	6	28	4	2	25	24	23	31	Dan	19	3	23	10	14	19	4	14	18	27	4	
EPnk	253	253	247	239	255	57	91	130	281	261	254	267	EPnk	140	168	164	168	153	162	156	155	163	161	163	
EPs	295	268	262	261	274	270	291	286	290	295	286	295	EPs	166	174	173	170	158	164	165	167	168	166	168	
EPvk	324	291	274	316	295	302	302	307	341	332	323	321	EPvk	169	183	184	170	165	167	175	170	172	171	172	
Dan	24	21	1	12	26	28	4	6	23	10	4	25	Dan	30	19	2	1	6	31	12	24	22	5	29	
EPnk			57				EPs	281		EPvk		341	EPnk	140					EPs	168		EPvk	184		



C.3. Dnevne vrednosti specifične električne prevodnosti z diagramom (l. 2002)

Št.: 3 IZVIR PODROTEJA												
EP v mikro S/cm			Tip: P			Kota"0": 327.796						
Dan	1	2	3	4	5	6	7	8	9	10	11	12
1	322	286	298	323	291	303	317	337	336			
2	321	285	270	324	291	303	319	338	337			
3	318	285	273	325	291	305	319	337	337			
4	318	288	278	327	293	308	319	333	337			
5	321	291	280	329	295	314	315	329	338			
6	325	293	285	330	300	317	306	331	339			
7	327	292	286	332	300	319	313	333	340			
8	327	281	286	333	302	302	319	316	341			
9	323	279	288	335	303	293	310	310	342			
10	321	284	291	340	305	295	314	313	343			
11	322	289	292	338	307	298	314	318	344			
12	322	290	295	329	304	298	313	294	345			
13	322	290	301	308	306	302	319	305	346			
14	322	292	303	290	301	306	322	313	347			
15	322	293	305	275	302	305	322	323	348			
16	323	294	307	279	305	304	323	325	348			
17	324	298	308	277	307	305	324	326	349			
18	326	302	309	277	310	306	325	327	349			
19	328	301	310	278	311	313	325	327	349			
20	329	295	311	278	313	314	328	328	349			
21	330	296	313	281	314	316	328	329	350			
22	331	297	315	283	310	318	329	331	350			
23	332	291	315	288	310	319	334	330	349			
24	334	294	316	293	311	320	334	331	344			
25	308	297	317	293	314	323	334	331	331			
26	295	297	318	295	316	324	336	332				
27	287	300	319	296	315	324	337	333				
28	290	300	320	294	306	326	337	334				
29	288		321	282	304	322	339	335				
30	285		321	287	300	321	339	335				
31	286		322		301		337	336				
Dan	30	28	2	15	1	7	6	12	25			
EPnk	284	254	267	274	290	272	302	274	327			
EPs	317	292	302	304	304	311	324	327	344			
EPvk	341	306	349	341	322	357	339	343	352			
Dan	24	28	1	10	26	8	29	11	22			
EPnk		254					EPs	314		EPvk	357	

